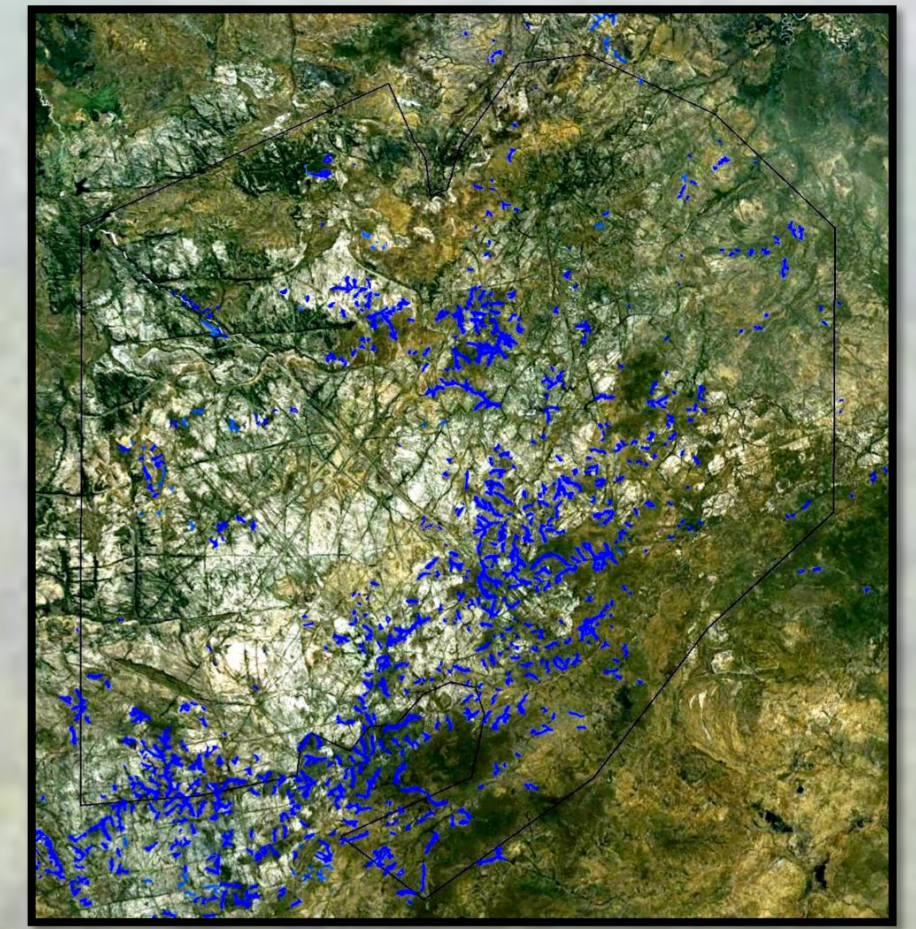


Headwater Wetlands



- The springs, swamps, billabongs and marshlands of the Arnhem Plateau are the headwaters for most of big rivers of the Top End, like the Katherine, Liverpool, East Alligator and Mann Rivers.
- Long lasting water and grassy areas mean that many of these wetlands are important camping and food places for Bininj.
- They are places with many different plants and animals, some which are only found in Arnhem stone country



Threats to Healthy Wetlands

The big threats to wetlands are buffalo, pigs and cane toads.

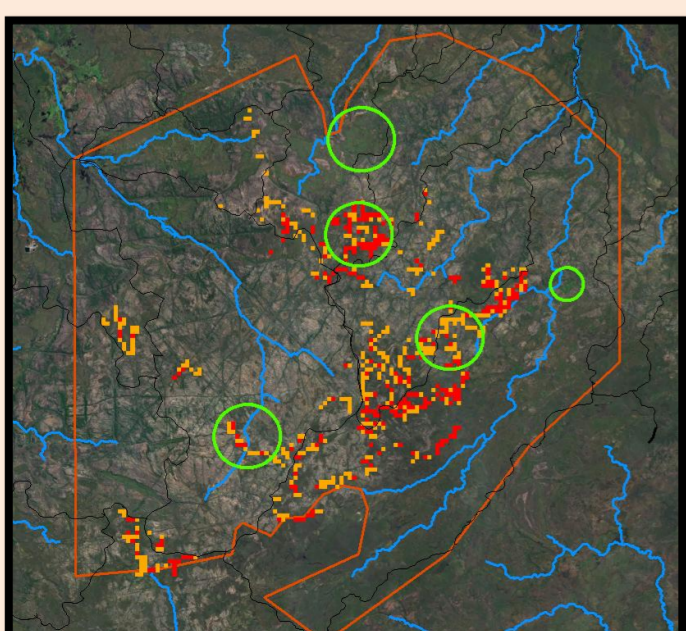
- Buffalo are a big threat to healthy water in springs and billabongs. They eat lots of grass, knock down trees, dig wallows, pollute water and cause erosion of stream banks.
- Pigs dig up the ground and eat native animals.
- Cane toads eat native frogs, fish and small animals. They are also poisonous so when other animals eat them they die.



Action

Buffalo damage is all over the wetlands. By trapping and shooting in places where damage is worst we can make many wetlands healthy again. Helicopter shooting late in the dry season when buffalo gather at the last wet places is the best time to shoot.

There is not much we can do to manage cane toads.



Targets

Bininj want wetlands to be safe for drinking and swimming. It is also important to have grass for kangaroo and a good mix of right animals in and around the water

Monitor

Rangers measure results with on ground surveys of water quality, plants, animals and buffalo damage. Large areas are assessed by measuring buffalo damage using aerial photos and computers.

