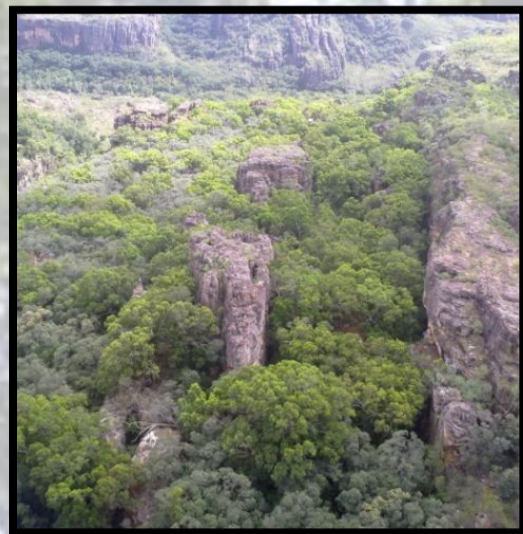
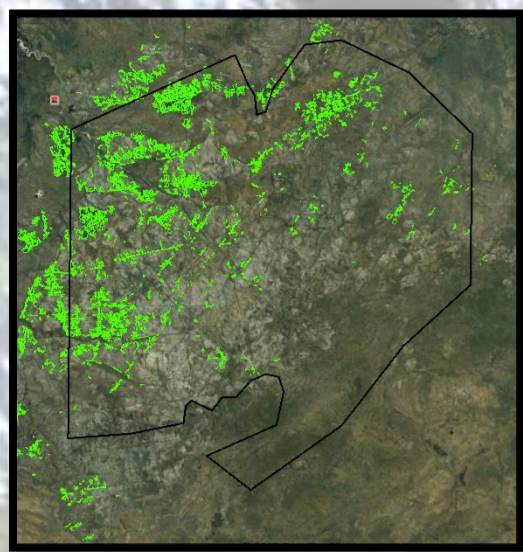
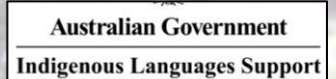
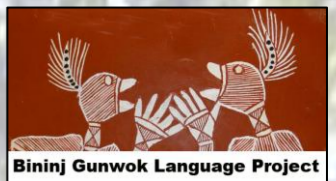
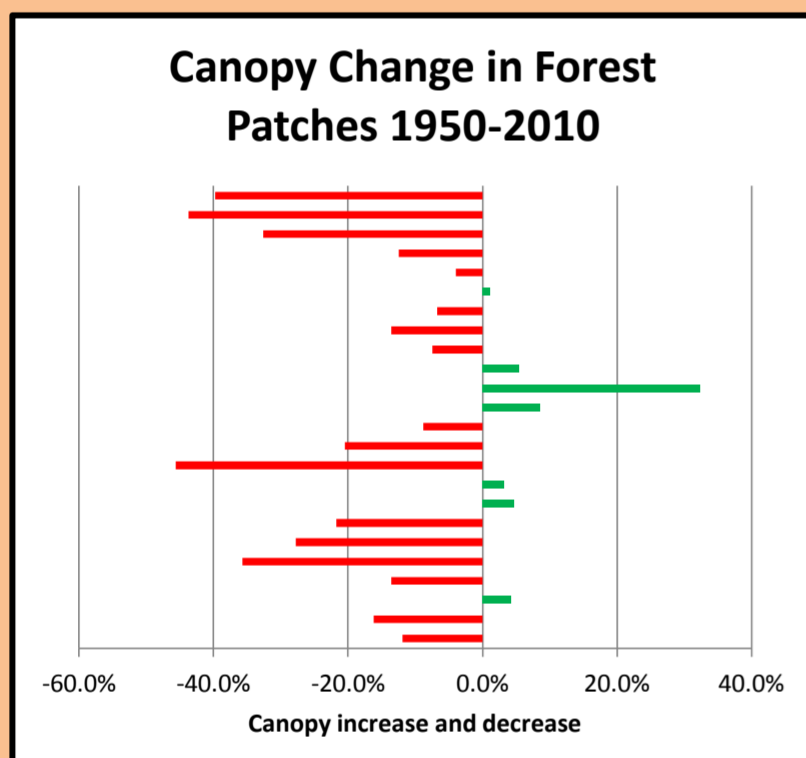
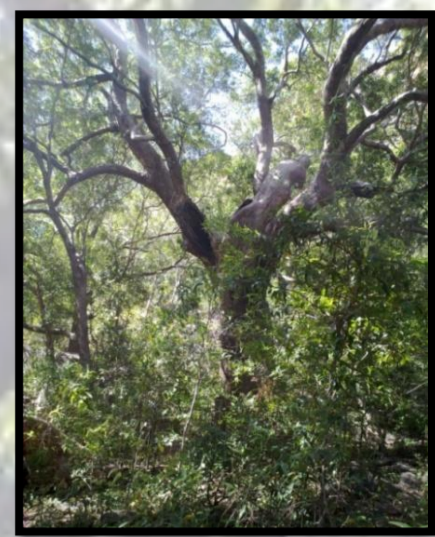




# Anbinik Anngarre



Anbinik makka mankonomkuyeng kundulk kore kuwarddewardde.  
 Kadjaldulkdi kore kuwarddewardde konhda Arnhem Land.  
 Bu manwurrk kamhre kabirriwurlhke manekke anbinik dja anlarrh  
 kabenedjarrkulkdownen.  
 Karringalke anbinik kuwarddebarrarn kore manwurrk minj kangimen.  
 Yika mak kore kabbal kangarredi, manekke anbinik.  
 Dabbarrabolk birridajreni manbinik djurlemarnbuyi ba  
 bolkkidjelkmeninij. Birriwurlhwurlhkeyi birriyingkibulemarnbuyinj  
 ba kamak minj kumrayinj darnki manwurrk.



## Kabolkwarremen kareh?

Korroko bu Bininj birribolkbawong, wanjh kundalk  
 wernhdalknudminj dja kimukminj manwurrk  
 bolkkime.

Bolkkime kangarreyakmen manbinik kore kabbal,  
 bu manwurrk kamre kawarrewon.



## Baleh karriyime?

Ngarrbenngundjikan dabbarrabolk  
 karrinahnan anbinik kungarre. Ngadmanwali  
 karriyingkibulemarnbun warridj ba  
 karrinahnan anbinik.

Kurrenge kamak bu karriwurlhwurlhke, minj  
 djal kaddumbek helicopter.

Ranger nawu kabirrihdurkmirri kabirrire kore  
 bininyak bolkkime ba bu  
 kabirriyingkibulemarnbun dja kabirribirrhme  
 dja kabirridulubun nganabbarru dja pig.



## Baleh nawu karridjare?

Bininj kabirridjare anbinik kabolkmakmen ba  
 bu kadjurlemek kadjurledi dja mayh  
 kabirridjurlewan andulkkerenge dja andulkkare  
 kadjaldi.

## Karridjalnahan

Ranger kabirribolknahan dja kabirrirohrokme  
 ba kamak manbinik minj kadulkyakmen.  
 Mandjewk danjbik kabirriyawoyhdurndeng  
 kabirriyawoyhbolknan ba kamak rowk.

