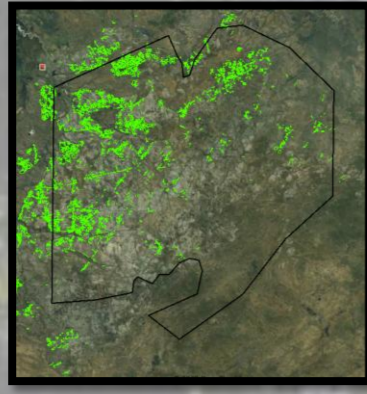


Anbinik Forest

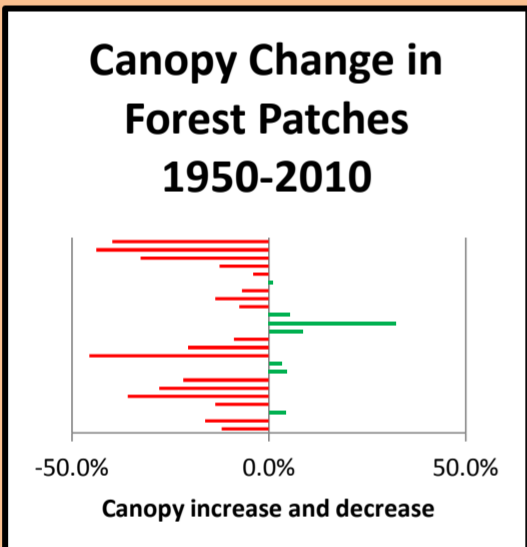


Anbinik is the biggest tree in the stone country.
 It only lives in Arnhem Stone country.
 Mostly lives in fire protected canyons
 Often grows with fire sensitive Cypress pine
 Also many small patches on flat country
 Forests are cool shady places which were protected by old people by burning

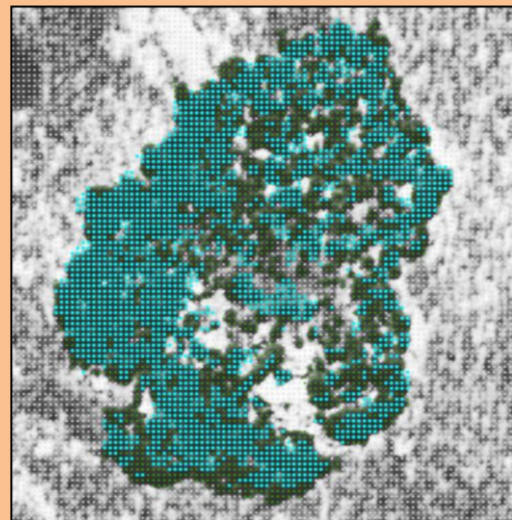


Threats

When people moved off country there were more big hot fires. These fires are shrinking Anbinik forest patches in the flat country.



Aerial photos from 1950 show that most unprotected patches are shrinking, some by nearly half in 60 years



Action

The best way to care for patches is to burn in the old way. On the ground, not just from a helicopter. Rangers will go to sites which are not visited much and burn around patches, create fire breaks and clear away scrub.



Targets

Bininj want Anbinik patches to be good shady places with right plants and animals in it. With old and young trees.

Monitoring

Rangers measure success by on ground surveys, taking photos and videos and by measuring aerial photos every 3 years.

